

abbotFox

154A



154 A
G

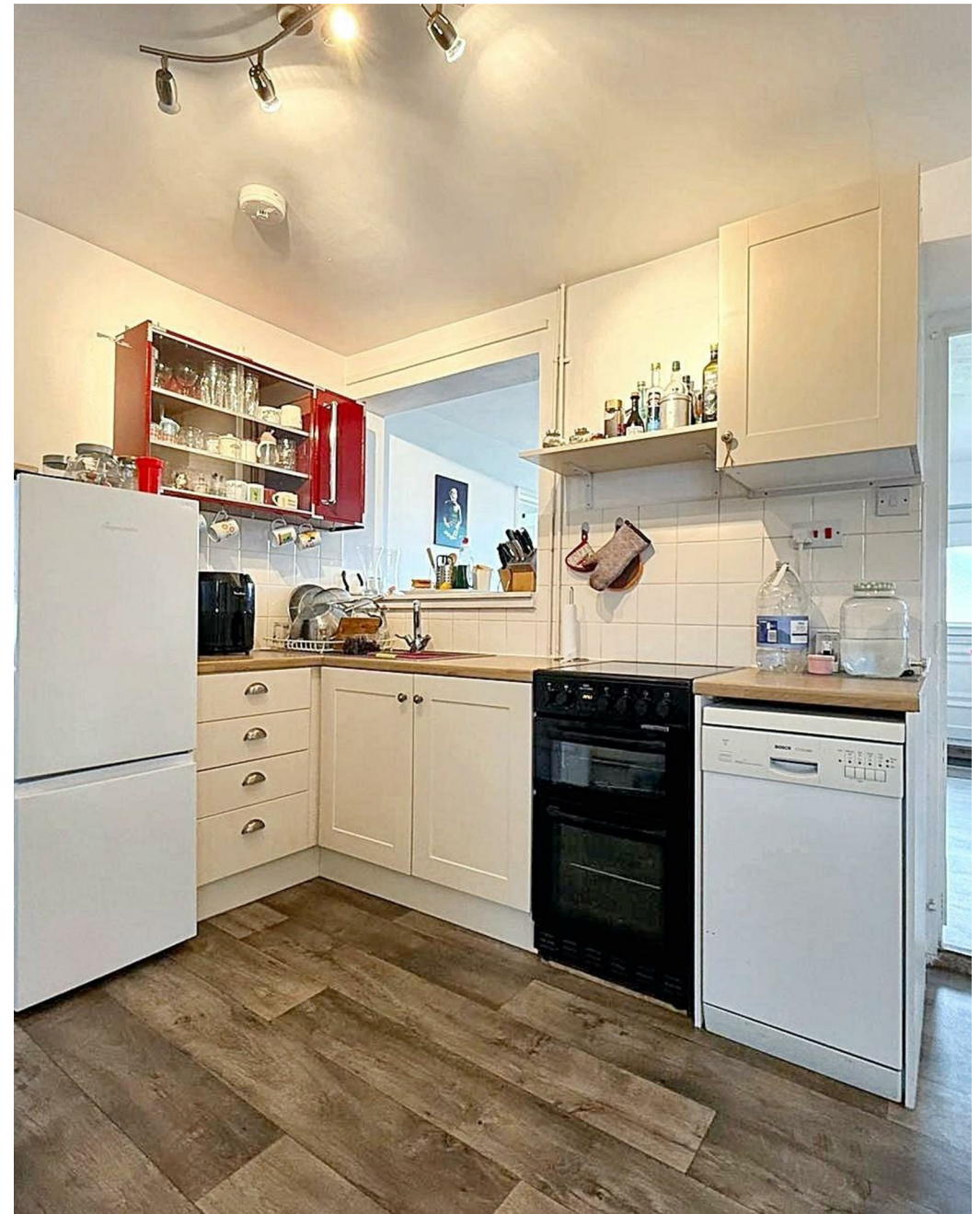
15

Gipsy Lane, Norwich
£950 PCM

“

We are a team of genuine individuals who hold a deep passion for both property and marketing. Collectively, we bring over 70 years of experience in the property market of Norfolk and Suffolk. Our affection for both counties runs deep, and we are enthusiastic about sharing our passion with you.

Colin McKenzie | **Branch Partner**







THE DETAIL _____

Abbotfox are pleased to present this spacious two-bedroom flat in the heart of Norwich. Perfect for those seeking comfort and convenience, it offers easy access to the city's amenities.

The flat features a bright and airy lounge, a spacious dining room, and two generously sized bedrooms with ample storage. The modern bathroom includes a bath, shower, washbasin, and WC.

A standout feature is the well-maintained garden, offering a peaceful outdoor space. Parking for one car and gas central heating add to the property's appeal.

Located in a vibrant city, you'll be close to cultural attractions like Norwich Castle and the Norwich Cathedral, as well as shopping and dining options. The beautiful Norfolk countryside, including the Norfolk Broads, is just a short distance away, offering outdoor activities.

This property is perfect for those looking for a comfortable living space in a prime Norwich location.



THE HIGHLIGHTS _____

- Next to UEA
- Two double bedrooms
- Unfurnished
- Large Garden
- Off Road Parking
- Two Reception Rooms

Let's talk

01603 660000

sales@abbotfox.co.uk

[@abbotfox](#)

EPC RATING -

Disclaimer – In accordance with the Property Misdescriptions Act, the company abbotFox gives notice that all descriptions, references to condition, necessary permissions for use and other details are given in good faith and believed to be correct, but any purchaser should not rely on them as statements of fact, and must satisfy themselves by inspection or other means, as to their accuracy.